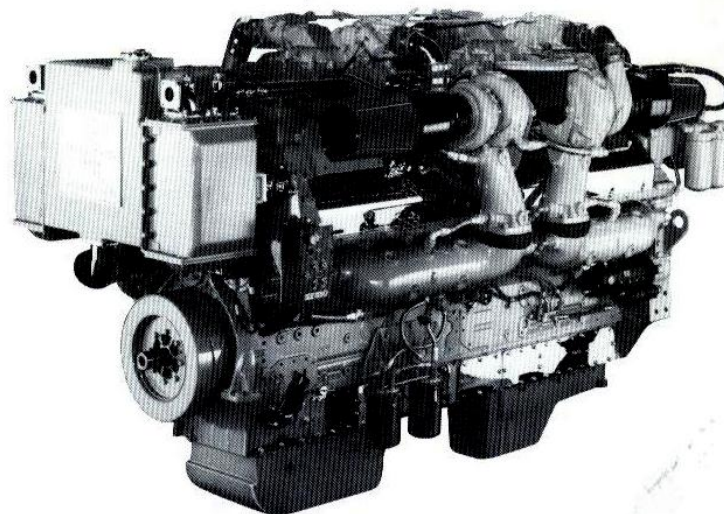


# DETROIT DIESEL

**16V-149TI DDEC  
2200 & 2400 BHP**

**Marine Pleasure Craft**



## General Specifications

Basic Engine	16V-149TI
Model — Port	9162-7C01
Starboard	9162-7C00
Description	Turbocharged—Raw water intercooled with Bypass Blower
Control	DDEC
Number of Cylinders	16
Bore and Stroke	5.75 in x 5.75 in (146 mm x 146 mm)
Displacement	2389 cu in (39.18 liters)
Compression Ratio	15.0 to 1
Weight (dry)	13450 lbs (6114 kg)

## Rated Power Output—Maximum

Gross Power	2200 BHP (1641 kW) @ 2100 RPM
Net Power	2135 SHP (1593 kW) @ 2100 RPM
Gross Power	2400 BHP (1790 kW) @ 2100 RPM
Net Power	2330 SHP (1738 kW) @ 2100 RPM

## Equipment Specifications

Alternator—24 volt, 75 amp
Cooling System—Cast expansion tank and dual raw water pumps
Crankcase vapor collectors with silencers
Crankshaft Pulley
DDEC—Detroit Diesel Electronic Controls
Engine Mounts—Resilient mounts for both engine and marine gear
Exhaust System—Cast jacket water-cooled manifolds
Flywheel Housing—SAE #0
Fuel System—Cam operated electronic unit injectors with low pressure USCG type A external hoses, fuel filters and cooler
Lube Oil Filter—Full flow, spin-on
Marine Gear—Available with Detroit Diesel-433G, 2.51:1 ratio
Oil Pan—Cast, designed for 0°-12° inclination angle, rear sump
Starting Motors—Two 24 volt electric

Rating conditions: ISO 3046, SAE J1349, SAE J1228  
77°F (25°C) and 29.31 in. Hg. (99 kPa) Barometer (Dry)

For a complete listing of standard and optional equipment,  
consult your authorized Detroit Diesel Corporation representative.

Photograph illustrates a typical marine engine